

State of Wyoming Corner Record

(In compliance with the CORNER PERPETUATION AND FILING ACT, Wyoming Statutes, 1997 Section 33-29-140 et. seq., and the Rules and Regulations of the Board of Professional Engineers and Professional Land Surveyors)
Reverse side of this form may be used if more space is needed.

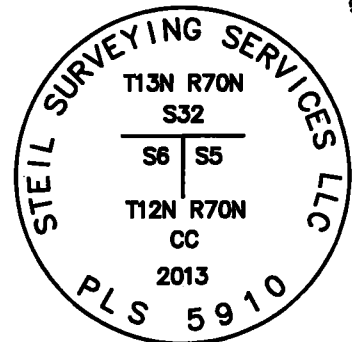
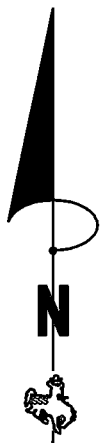
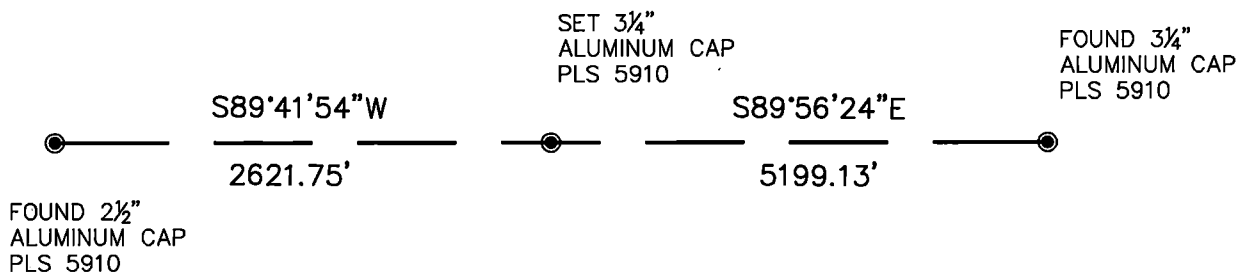
Record of original survey and citation of source of historical information (if corner is lost or obliterated). Description of corner monumentation evidence found and/or monument and accessories established to perpetuate the location of this corner. Sketch of relative location of monument, accessories, and reference points with course and distance to adjacent corner(s) (if determined in this survey). Method and rationale for reestablishment of lost or obliterated corner.

RECORD: SET A SANDSTONE 28X17X4 10INS DEEP & IN A MOUND OF STONE MARKED 5 NOTCHES E EDGE 1 NOTCH W EDGE C.C., FOR CLOSING COR TO SEC 5,6 T12N, R70W

MONUMENT FOUND: NONE

MONUMENT SET: SET A 5/8"X24" REBAR WITH A 3/4" ALUMINUM CAP. PROJECTING 10" ABOVE GROUND SURFACE, SURROUNDED BY A MOUND

REFERENCES: NONE



RECP #: 768318
RECORDED 12/26/2019 AT 1:41 PM BK# 2653 PG# 292
Debra K. Lee, CLERK OF LARAMIE COUNTY, WY PAGE 1 OF 1

DRAWING NOT TO SCALE

Date of Field Work: 06/21/13

Office Reference: 13318

Monument Inscription

Cross Index Plat

	1	2	3	4	5	6	7	8	9	10	11	12	13	14	15	16	17	18	19	20	21	22	23	24	25
A					●																				
B																									
C																									
D																									
E																									
F																									
G																									
H																									
J																									
K																									
L																									
M																									
N																									
O																									
P																									
Q																									
R																									
S																									
T																									
U																									
V																									
W																									
X																									
Y																									
Z																									

Firm/Agency, Address

STEIL SURVEYING SERVICES LLC

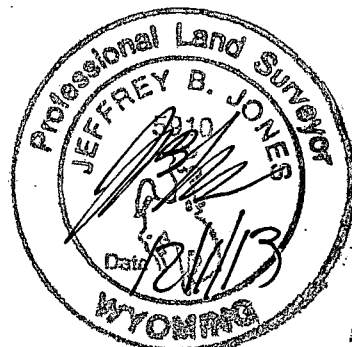
1102 West 19th Street

Cheyenne, Wyoming 82001

Telephone Number: **(307) 634-7273**

This corner record was prepared by me or under my direction and supervision.

SEAL & SIGNATURE



Corner Name N Quarter Section 5, T 12 N, R 70 W, 6th P.M.

Cross-Index No.: A-5

County: LARAMIE Wyoming

SBRPEPLS/PLSW: March 1994; PLSW January 1998